

SR Smith®

IN-POOL FURNITURE

Pool **Better**™





IN-POOL FURNITURE

CONTENTS

- Overview 3
- Tables + Seating..... 4
- Destination Series Lounger..... 6
- Destination Series
Rocking Lounge Chair 8
- R-Series Lounger..... 10

BRING YOUR VACATION HOME™

Inspired by the world's most luxurious resorts, S.R.Smith's new line of professional grade in-pool furniture sets a new standard for style and elegance. The Destination Series features table and seating options designed to create spaces for conversation and relaxation. Made in the USA using advanced manufacturing technology, Destination Series products are lightweight and super strong.

MINIMUM WEIGHT - MAXIMUM STRENGTH

Resin Transfer Molding (RTM) is an advanced manufacturing process that is used in a diverse range of applications from aerospace to automotive products. The RTM process creates a composite material that has a high strength to weight ratio - although lightweight, it is exceptionally strong and durable. RTM products offer a truly unique look that is salt pool friendly and UV resistant to protect colors from fading.



SALT POOL FRIENDLY

We know pool builders and consumers alike enjoy the benefits of salt chlorinator systems - that's why we've designed a line of products that perform well in salt pool environments. Our Salt Pool Friendly icon is your visual assurance that the most durable and salt friendly materials have been used in manufacturing.



ADAPTER KITS

Sun shelf tables install into most 1.5" umbrella anchors in three easy steps with the Adapter Kit from S.R.Smith. Adapter Kits have been verified for use with most popular 6" umbrella anchor manufacturers including Aqua Star, Waterways and CMP. Compatibility with other brands is not guaranteed.





DESTINATION SERIES TABLES + SEATING

Make the most of a sun shelf with tables and seating that allows you to cool off without splashing around. Bring your book, your favorite beverage and a snack to spend hours relaxing in your personal destination space.



NEW CONSTRUCTION

Build in resort features that are flexible, durable and elegant with Destination Series table and seating.

FEATURES:

- Tables & seats designed for 6" anchors
- Pole height can be customized in the field (suggest using a hacksaw with a new blade)
- Easy to insert and remove without tools
- Salt pool friendly
- Made in USA

16" Pool Seat includes 42" pole	16" Table with Umbrella Support	30" Pool or Spa Table and Umbrella Support	30" Pool or Spa Table with Cup Holders and Umbrella Support	54" Pole may be cut to custom length	18" Pole	Gunite 6" Bronze Anchor	Vinyl Liner 6" Plastic Anchor
Mounts to pole and secured in bronze anchor				For tall tables in pools or spas	For sun shelves	Supports pole for tables and seats	

RETROFIT TABLE KITS

Upgrade an ordinary sun shelf to an extraordinary conversation space or relaxation station with Retrofit Sun Shelf Table Kits. Kits include everything you need to upgrade your shade with easy to install adapter that enables you to retrofit your existing umbrella sleeve with professional grade and highly functional in-pool furniture.

FEATURES:

- Tables with or without cupholders
- Available in assorted colors and visual textures
- Easy to insert and remove without tools
- Salt pool friendly
- Made in USA

16" Table with Umbrella Support	30" Pool or Spa Table and Umbrella Support	30" Pool or Spa Table with Cup Holders and Umbrella Support	18" Pole	Umbrella Sleeve Adapter	7.5" adapter pole fits existing umbrella sleeve
---------------------------------	--	---	----------	-------------------------	---

COLOR OPTIONS



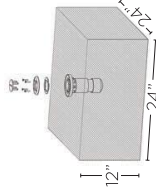
REPLACE THE XX IN THE PART NUMBERS TO INDICATE COLOR CODE WHEN ORDERING.

PART #	DESCRIPTION
GUNITE NEW CONSTRUCTION	
REPLACE THE XX IN THE PART NUMBERS TO INDICATE COLOR CODE WHEN ORDERING.	
POOL TABLES	
WS-POOLTABLE-XX-C	In-Pool/Spa 30" Table, 54" tall 190 x .065 Support Pole and 6" Bronze Pool Anchor with cap
WS-PT-NO-ANC-XX-C	In-Pool/Spa 30" Table and 54" tall 190 x .065 Support Pole Only - NO ANCHOR
WS-POOLTABLE-CH-XX-C	In-Pool/Spa 30" Table, with 4 cup holders, 54" tall 190 x .065 Support Pole and 6" Bronze Pool Anchor with cap
WS-PT-NO-ANC-CH-XX-C	In-Pool/Spa 30" Table, with 4 cup holders, 54" tall 190 x .065 Support Pole Only - NO ANCHOR
WS-16 TABLE-XX-C	16" Table with Umbrella Hole, 18" tall 190 x .065 Support Pole and 6" Bronze Pool Anchor with cap
WS-16 NOANC-XX-C	16" Table with Umbrella Hole, 18" tall 190 x .065 Support Pole Only - NO ANCHOR
POOL SEATING	
WS-POOLSEAT-XX-C	In-Pool/Spa 16" Seat, 42" tall 190 x .065 Support Pole and 6" Bronze Pool Anchor with cap
WS-PS NOANC-XX-C	In-Pool/Spa 16" Seat and 42" tall 190 x .065 Support Pole Only - NO ANCHOR



ANCHOR FOR GUNITE POOLS
Tables and seats install in pools w/6" bronze anchor
WS-POOL-ANCHOR

MINIMUM CONCRETE POUR DIMENSIONS

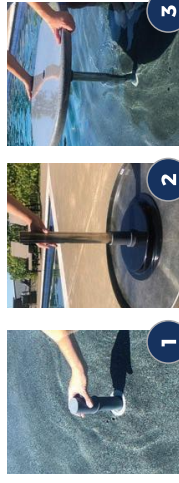


ANCHOR FOR VINYL POOL LINER
Tables and seats install in vinyl liner pools
VL-ANCHOR 190

PART #	DESCRIPTION
WS-POOL-ANCHOR	6" (190) Bronze Anchor w/ Cap
VL-ANCHOR 190	6" Vinyl Liner Anchor w/ Cap

RETROFIT SUN SHELF TABLE KITS

Select the 16" or 30" table you want to add to your sun shelf and your kit will come complete with everything you need to retrofit your existing umbrella sleeve. You can upgrade your shade in 3 easy steps!



*Adapter designed for 7.5" anchor sleeves; may be cut down to side for shorter umbrella anchor sleeves.

- 1 - Place adapter into existing anchor*
- 2 - Slide support pole into the table
- 3 - Place table and pole onto adapter and insert umbrella

PART #	DESCRIPTION
PL-ADAPTER 150	Adapter Kit

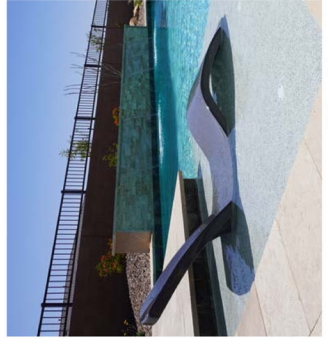
PART #	DESCRIPTION
VINYL NEW CONSTRUCTION	
REPLACE THE XX IN THE PART NUMBERS TO INDICATE COLOR CODE WHEN ORDERING.	
POOL TABLES	
VL-POOLTABLE-XX-C	In-Pool/Spa 30" Table, 54" tall 190 x .065 Support Pole and 190 Vinyl Liner Anchor with cap
WS-PT-NO-ANC-XX-C	In-Pool/Spa 30" Table, 54" tall 190 x .065 Support Pole Only - NO ANCHOR
VL-POOLTABLE-CH-XX-C	In-Pool/Spa 30" Table, with 4 Cup Holders, 54" tall 190 x .065 Support Pole and 190 Vinyl Liner Anchor
WS-PT-NO-ANC-CH-XX-C	In-Pool/Spa 30" Table, with 4 Cup Holders, 54" tall 190 x .065 Support Pole Only - NO ANCHOR
VL-16 TABLE-XX-C	16" Table with umbrella hole, 18" tall 190 x .065 Support Pole and 190 Vinyl Liner Anchor with cap
WS-16 NOANC-XX-C	16" Table with umbrella hole, 18" tall 190 x .065 Support Pole Only - NO ANCHOR
POOL SEATING	
VL-POOLSEAT-XX-C	In-Pool/Spa 16" Seat, 42" tall 190 x .065 Support Pole and 190 Vinyl Liner Anchor with cap
WS-PS NOANC-XX-C	In-Pool/Spa 16" Seat, 42" tall 190 x .065 Support Pole Only - NO ANCHOR

*Retrofit Umbrella Anchor Upgrade Installation
Notes: Most common umbrella anchors are typically 1.5" diameter and either 6" or 4" deep. Anchor depth typically range from 6" to 4" depth. Confirm the depth of the sun shelf and umbrella anchor and cut support pole as required for specific application.

DESTINATION SERIES Destination Lounger™

The Destination Lounger™ lets you relax and enjoy the pool without a splash. Elegant design and sturdy construction combine to give pool owners the opportunity to upgrade their sun shelf space with ease. The innovative design allows pool owners to easily fill the base section with water but, more importantly, also allows them to move the lounger to remove water so it's easy to take it off the sun shelf when not in use.

- Perfect for residential or commercial use
- For use on a pool ledge with water depths up to 12 inches
- High-quality RTM composite material
- UV protection to resist fading
- Compatible with all pool types, including vinyl
- Exclusive colors and visual textures
- Patent pending
- Easy to drain and remove when not in use
- 2-pack Loungers available
- Made in the USA



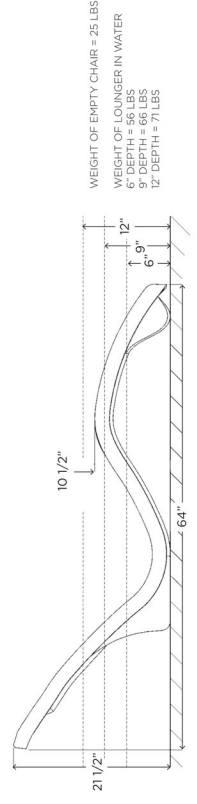
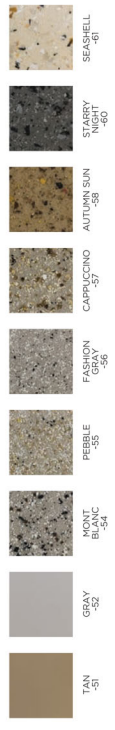
-60 Starry Night shown



PART #	DESCRIPTION
SHIPPING: 35 lbs - 68" L x 22" W x 17.22" H CLASS 70	
DS-1-51	Destination Lounger - Solid Tan
DS-1-52	Destination Lounger - Solid Gray
DS-1-54	Destination Lounger - Mont Blanc
DS-1-55	Destination Lounger - Pebble
DS-1-56	Destination Lounger - Fashion Gray
DS-1-58	Destination Lounger - Cappuccino
DS-1-60	Destination Lounger - Autumn Sun
DS-1-61	Destination Lounger - Starry Night
DS-1-61	Destination Lounger - Seashell

PART #	DESCRIPTION
2-PACK SHIPPING: 112 lbs - 68" L x 45" W x 22" H CLASS 70	
DS-H-51-2PK	Destination Lounger - Solid Tan - 2-Pack
DS-H-52-2PK	Destination Lounger - Solid Gray - 2-Pack
DS-H-54-2PK	Destination Lounger - Mont Blanc - 2-Pack
DS-H-55-2PK	Destination Lounger - Pebble - 2-Pack
DS-H-56-2PK	Destination Lounger - Fashion Gray - 2-Pack
DS-H-58-2PK	Destination Lounger - Cappuccino - 2-Pack
DS-H-60-2PK	Destination Lounger - Autumn Sun - 2-Pack
DS-H-61-2PK	Destination Lounger - Starry Night - 2-Pack
DS-H-61-2PK	Destination Lounger - Seashell - 2-Pack

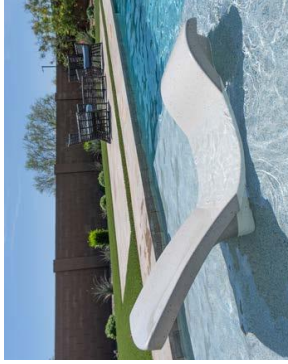
COLOR OPTIONS



DESTINATION SERIES Rocking Lounge Chair

The Destination Series Rocking Lounge Chair is the latest addition to S.R.Smith's In-Pool Furniture line. This elegantly designed and sturdy model offers a slight rocking feature that allows for easier exit off the chair while in the pool. The innovative design allows pool owners to easily drain the water and remove from the sun shelf when not in use.

- Perfect for residential or commercial use
- For use on pool shelves with water depths up to 12 inches
- Offers slight rocking feature for easier exit off chair
- High-quality RTM composite design
- UV protected to resist fading
- Compatible with all pool types
- Exclusive colors and visual textures
- Patent pending
- Easy to drain and remove when not in use
- 2-pack Chairs available
- Made in the USA



-61 Seashell shown



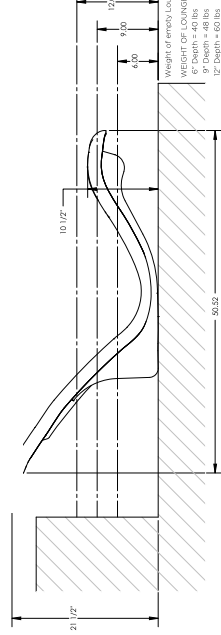
PART #	DESCRIPTION
SHIPPING: 35 lbs - 66" L x 22" W x 17 1/2" H CLASS 70	
DS-2-51	Rocking Lounge Chair - Tan
DS-2-52	Rocking Lounge Chair - Gray
DS-2-54	Rocking Lounge Chair - Mont Blanc
DS-2-55	Rocking Lounge Chair - Pebble
DS-2-56	Rocking Lounge Chair - Fashion Gray
DS-2-57	Rocking Lounge Chair - Cappuccino
DS-2-58	Rocking Lounge Chair - Autumn Sun
DS-2-60	Rocking Lounge Chair - Starry Night
DS-2-61	Rocking Lounge Chair - Seashell

PART #	DESCRIPTION
2-PACK SHIPPING: 112 lbs - 66" L x 45" W x 22" H CLASS 70	
DS-2-51-2PK	Rocking Lounge Chair - Tan - 2-Pack
DS-2-52-2PK	Rocking Lounge Chair - Gray - 2-Pack
DS-2-54-2PK	Rocking Lounge Chair - Mont Blanc - 2-Pack
DS-2-55-2PK	Rocking Lounge Chair - Pebble - 2-Pack
DS-2-56-2PK	Rocking Lounge Chair - Fashion Gray - 2-Pack
DS-2-57-2PK	Rocking Lounge Chair - Cappuccino - 2-Pack
DS-2-58-2PK	Rocking Lounge Chair - Autumn Sun - 2-Pack
DS-2-60-2PK	Rocking Lounge Chair - Starry Night - 2-Pack
DS-2-61-2PK	Rocking Lounge Chair - Seashell - 2-Pack

COLOR OPTIONS



ROCKING LOUNGE CHAIR DIMENSIONS





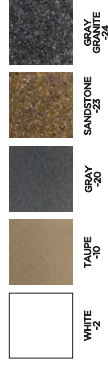
R-Series™ Rotomolded Lounger

The R-Series™ Rotomolded Lounger lets you relax and enjoy the pool without a splash. Design elegance and sturdy construction combine to give pool owners the opportunity to upgrade their sun shelf with ease. The R-Series design allows pool owners to easily drain the water and remove from the sun shelf when not in use.

- Perfect for residential or commercial use
- For use on sun ledges with water depths up to 12 inches
- High-quality rotomolded design
- UV protection to resist fading
- Compatible with all pool types
- Exclusive colors and visual textures
- Easy to drain and remove when not in use
- Patent pending
- 2-pack Loungers available
- Made in the USA

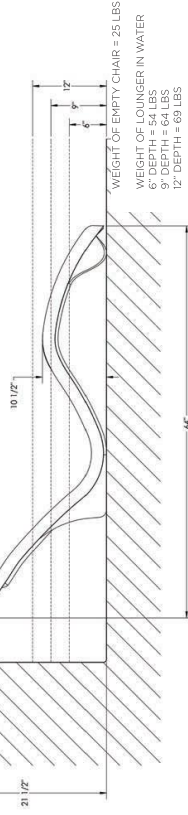


COLOR OPTIONS



PART #	DESCRIPTION
SHIPPING: 35 lbs - 68"L x 22"W x 17.22"H CLASS 70	
RS-1-2	R-Series Lounger - White
RS-1-10	R-Series Lounger - Taupe
RS-1-20	R-Series Lounger - Gray
RS-1-23	R-Series Lounger - Sandstone
RS-1-24	R-Series Lounger - Gray Granite
2-PACK SHIPPING: 112 lbs - 68"L x 45"W x 22"H CLASS 70	
RS-1-10-2PK	R-Series Lounger - Taupe - 2-Pack
RS-1-20-2PK	R-Series Lounger - Gray - 2-Pack
RS-1-23-2PK	R-Series Lounger - Sandstone - 2-Pack
RS-1-24-2PK	R-Series Lounger - Gray Granite - 2-Pack

R-SERIES LOUNGER DIMENSIONS





Pool Better™

SRSmith®

800.824.4387
srsmith.com

No part of this may be copied or reproduced without the expressed written consent of S.R.Smith, LLC

©Copyright 2021 S.R.Smith, LLC. All rights reserved. | M-E-BRO-191

10M 0421