

6000 AND 8000

DIRECT VENT GAS FIREPLACES

HEAT & GLO®



Available IntelliFire®
app and voice control



6000 & 8000

The flagship 6000/8000 series from Heat & Glo® is designed with your lifestyle in mind. Four models and two sizes provide flexibility to upgrade with enhanced features.

Start with the C model for moderate heat and vibrant flames. Move to the CL for upgraded LED accent lighting, choice of brick interior or reflective black glass and an IntelliFire Touch® wireless remote control for simple and intuitive operation. Select the CLX for the ultimate fireside experience with bold, vibrant flames, high definition logs, LED-illuminated ember bed and virtually invisible anti-reflective ceramic glass. Or go Modern with a clean front, ebony glass, and a reflective fluted black glass interior. On all models, add an optional IntelliFire app and voice control.



6000 MODERN shown with clean face front in black, ebony glass, and fluted black glass interior panels



C



CL

YOUR FIRE. YOUR WAY.



CLX



MODERN



8000CLX with Clean Face front in black and Tranquil Greige interior panels

©SpaceCrafting



8000CL shown with Halston front in black and fade-resistant reflective black glass interior panels

©SpaceCrafting



6000CL shown with Iron Age front, Stratford brick interior panels and painted Battlefield mantel

©SpaceCrafting



8000C shown with Arcadia front in black and Stratford brick interior panels

©SpaceCrafting

MODELS AVAILABLE

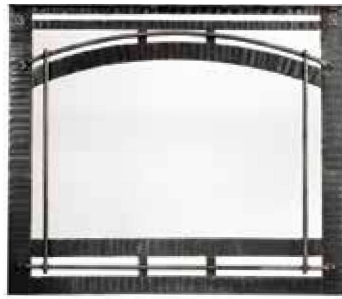
Choose a model to fit your space and style.

FEATURES	6000C	6000CL	6000CLX	6000 MODERN ¹	8000C	8000CL	8000CLX	8000 MODERN ¹
Fireplace Width	36"	36"	36"	36"	42"	42"	42"	42"
Room Size Fit	Medium to large	Medium to large	Medium to large	Medium to large	Medium to large	Medium to large	Medium to large	Medium to large
BTU/hr Input	30,000	35,000	40,000	34,000	35,000	40,000	45,000	35,500
Interior Panels	Standard black metal; optional Stratford brick or fade-resistant reflective black glass (three-piece)	Standard Stratford brick or fade-resistant reflective black glass (four-piece)	Standard Stratford brick or fade-resistant reflective black glass (four-piece)	Standard fluted black glass	Standard black metal; optional Stratford or fade-resistant reflective black glass (three-piece)	Standard Stratford brick or fade-resistant reflective black glass (four-piece)	Standard Stratford brick or fade-resistant reflective black glass (four-piece)	Standard fluted black glass
Fan Kit	Optional	Optional	Standard	Optional	Optional	Optional	Standard	Optional
IntelliFire® App & Voice Control	Optional IntelliFire Wi-Fi Module	Optional IntelliFire Wi-Fi Module	Optional IntelliFire Wi-Fi Module	Optional IntelliFire Wi-Fi Module	Optional IntelliFire Wi-Fi Module	Optional IntelliFire Wi-Fi Module	Optional IntelliFire Wi-Fi Module	Optional IntelliFire Wi-Fi Module
IntelliFire Touchscreen Remote Control	Optional	Standard	Standard	Optional	Optional	Standard	Standard	Optional
Wireless Wall Switch	Optional	Optional	Optional	Optional	Optional	Optional	Optional	Optional
Logs	Six standard-definition logs	Seven standard-definition logs	Seven high-definition logs	N/A	Six standard-definition logs	Seven standard-definition logs	Seven high-definition logs	N/A
Embers	Glowing embers	Glowing embers	LED illuminated embers	Standard ebony glass media	Glowing embers	Glowing embers	LED illuminated embers	Standard ebony glass media
Accent Lighting	N/A	Standard LED accent lighting ²	Standard LED accent lighting ²	N/A	N/A	Standard LED accent lighting ²	Standard LED accent lighting ²	N/A
Glass	Tempered	Ceramic	Virtually invisible anti-reflective ceramic	Virtually invisible anti-reflective ceramic	Tempered	Ceramic	Virtually invisible anti-reflective ceramic	Virtually invisible anti-reflective ceramic
Ignition System	IntelliFire Touch	IntelliFire Touch	IntelliFire Touch	IntelliFire Touch	IntelliFire Touch	IntelliFire Touch	IntelliFire Touch	IntelliFire Touch
Flame Turndown	50%	50%	50%	30%	50%	50%	50%	30%



1 Available in natural gas only. 2 Available with Stratford brick interior panels only.

FRONT OPTIONS



CHATEAU FORGE
Available in hand-crafted,
hammered steel.



HALSTON
Available in black,
new bronze or graphite.



IRON AGE
Available in black,
new bronze or graphite.



CLEAN FACE
Available in black,
new bronze or graphite.



FOLIO
Available in black,
new bronze or graphite.



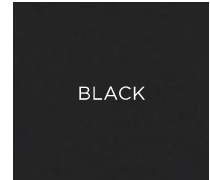
GALLERIA
Available in black,
new bronze or graphite.



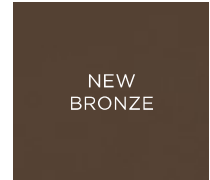
ARCADIA
Available in black,
new bronze or graphite.

FRONT FINISHES

6000/8000 fronts are available in a variety of finishes. Refer to the front options shown left for the finishes that are available on your front of choice.



BLACK



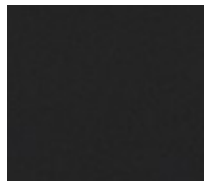
NEW
BRONZE



GRAPHITE

INTERIOR PANELS

Interior panels add intricate detail and enhance the fireside appearance.



BLACK METAL
(Standard on
C models)



STRATFORD BRICK
(Standard on CL/
CLX models;
optional on C
models)



**TRANQUIL
GREIGE BRICK**
(Standard on CLX
models only)



**FADE-RESISTANT
REFLECTIVE
BLACK GLASS**
(Standard on CL/
CLX; optional on
C models)



**FADE-RESISTANT
FLUTED
BLACK GLASS**
(Standard on
Modern model)



EBONY GLASS
(Standard)



CRYSTAL GLASS
(Optional)



AMBER GLASS
(Optional)



COBALT GLASS
(Optional)

MODERN INTERIOR OPTIONS

Accent the firebox with glass. Four cool color options to warm up your flame. Available for Modern model only.

CONTROLS

INTELLIFIRE APP

All the features of a remote control with an app installed on your smart device. Monitor your fire from anywhere or even control it with the sound of your voice. IntelliFire is compatible with voice assistants Amazon Alexa and Google Assistant.



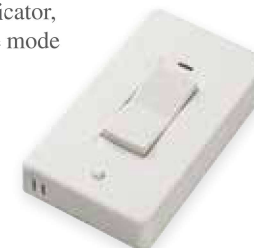
TOUCHSCREEN REMOTE

Features: on/off, flame height adjustment, fan speed, lights adjustment, thermostat mode, room temperature readout, child lock, timer mode, battery backup, cold climate mode, power vent, wall docking station (fan, lights and power vent are dependent on your fireplace).



WIRELESS WALL SWITCH

Features: on/off, battery strength indicator, cold climate mode



6000 & 8000 TECHNOLOGIES



INTELLIFIRE TOUCH IGNITION SYSTEM

IntelliFire Touch is our most advanced intermittent-pilot ignition (IPI) system, making operating your appliance simple, smart and safe. Select the IntelliFire app, touch-screen remote control or wireless wall switch for the solution that fits your lifestyle.



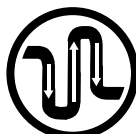
DIRECT VENT TECHNOLOGY

Direct Vent fireplaces remove 100% of combustion exhaust and odors outside of the home. These sealed fireplaces provide optimal heat, conserve energy and ensure clean, safe indoor air quality.



HEAT MANAGEMENT SOLUTIONS

Bring the warmth from your fireplace to the rest of your home, up to 20 feet away. Heat management technology can redirect up to 50% of the heat to another area, also reducing wall temperatures above the fireplace. Choose between a Heat-Zone® kit to transfer heat where you want it, or a Heat-Out® kit to draw heat from your fireplace and direct it outside, up to 25 feet away. When run continuously on high, it can redirect up to 40% of the heat off the fireplace, also reducing wall temperatures above the fireplace.



POWER VENT TECHNOLOGY

Fireplaces aren't just for exterior walls. A fan-powered accessory with slim venting can zigzag throughout your home—up, down, over or under—making it possible to install a gas fireplace virtually anywhere.



LED ACCENT LIGHTING

Superior performance and extended efficiency. This technology provides high-contrast, brilliant lighting to accentuate the flames. Can be used as mood lighting, with or without the flames.



LED EMBER BED

Add an extra layer of dimension and light to your fire. Realistic illuminated LED embers let you enjoy the ambiance, with or without the fire.



FADE-RESISTANT BLACK GLASS AND FLUTED GLASS PANELS

A clean modern look never gets dull. Just like these black glass interiors. Their hot. And look that way, too. For the life of your fireplace.



HIGH DEFINITION LOGS

Logs are a key element of your fireside experience. All Heat & Glo logs are hand-painted. For the most authentic appearance and highest level of detail, opt for the CLX model with high definition logs.



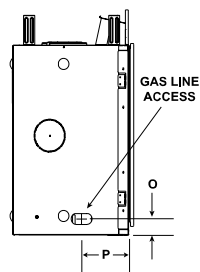
ANTI-REFLECTIVE GLASS

A cleaner, more distinct view of the fire. A glare reduction of 89% over standard ceramic glass, making it virtually invisible. And an experience so real, friends may just try and add a log to the fire.

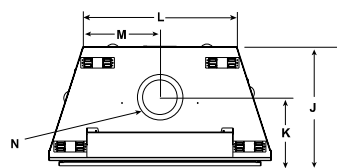
SPECIFICATIONS

MODEL	FRONT WIDTH		BACK WIDTH		HEIGHT		DEPTH		GLASS SIZE	BTU/HOUR INPUT (NG)
	UNIT	FRAMING	UNIT	FRAMING	UNIT	FRAMING	UNIT	FRAMING		
6000CLX, 6000CL, 6000C, 6000 MODERN	41 [1041]	42 [1067]	28-1/2 [724]	42 [1067]	39-7/8 [1013]	40-1/8 [1019]	21-1/2 [546]	22 [559]	32 x 21-1/2 [813 x 546]	CLX: 40,000 CL: 35,000 C: 30,000 MODERN: 34,000
8000CLX, 8000CL, 8000C, 8000 MODERN	48 [1219]	49 [1245]	35-1/2 [901]	49 [1245]	41-7/8 [1064]	42-1/8 [1070]	21-1/2 [546]	22 [559]	39 x 23-5/8 [991 x 600]	CLX: 45,000 CL: 40,000 C: 35,000 MODERN: 35,500

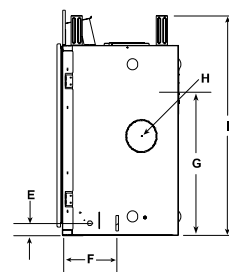
LEFT SIDE VIEW



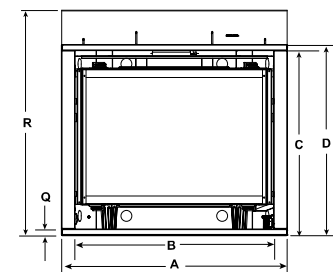
TOP VIEW



RIGHT SIDE VIEW



FRONT VIEW



MODEL	A	B	C	D	E	F	G	H	I	J	K	L	M	N	O	P	Q	R
6000C 6000CL 6000CLX	41 [1041]	36-1/8 [918]	33-1/2 [851]	34-5/8 [879]	2-1/4 [57]	9-11/16 [246]	26-7/8 [683]	6 [152]	39-7/8 [1013]	21 [533]	11-11/16 [297]	28-1/2 [724]	14-1/4 [362]	8-1/2 [216]	2-7/8 [73]	8-1/2 [216]	1 [25]	40-7/8 [1038]
6000 MODERN	41 [1041]	36-1/8 [918]	33-1/2 [851]	34-5/8 [879]	2-1/4 [57]	9-11/16 [246]	26-7/8 [683]	6 [152]	39-7/8 [1013]	21 [533]	11-11/16 [297]	28-1/2 [724]	14-1/4 [362]	8-1/2 [216]	2-7/8 [73]	8-1/2 [216]	1 [25]	40-7/8 [1038]
8000C 8000CL 8000CLX	48 [1219]	43-1/8 [1096]	35-1/2 [902]	36-5/8 [930]	2-3/8 [60]	9-15/16 [252]	28-7/8 [734]	6 [152]	41-7/8 [1064]	21 [533]	11-11/16 [297]	35-1/2 [901]	17-3/4 [451]	8-1/2 [216]	2-7/8 [73]	8-1/2 [216]	1 [25]	42-7/8 [1089]
8000 MODERN	48 [1219]	43-1/8 [1096]	35-1/2 [902]	36-5/8 [930]	2-3/8 [60]	9-15/16 [252]	28-7/8 [734]	6 [152]	41-7/8 [1064]	21 [533]	11-11/16 [297]	35-1/2 [901]	17-3/4 [451]	8-1/2 [216]	2-7/8 [73]	8-1/2 [216]	1 [25]	42-7/8 [1089]

Dimensions are in inches and millimeters. Product information is not complete and is subject to change without notice. Product installation must adhere strictly to instructions shipped with product. We recommend measuring individual units at installation. Assumes the use of 1/2" sheetrock. NOTE: Combustible material should not cover the face. Make sure you do NOT cover the decorative door opening.

Refer to installation manual for detailed specifications on installing this product. Heat & Glo® reserves the right to update units periodically. The flame and ember appearance may vary based on the type of fuel burned and the venting configuration used. Actual product appearance, including flame, may differ from product images.

EFFICIENCIES

EnerGuide (CSA P.4.1-15) EnerGuide is a rating used in Canada to measure annual fireplace efficiency.

6000 CLX	6000 CL	6000 C	8000 CLX	8000 CL	8000 C	6000 MODERN	8000 MODERN
67% (NG)	68% (NG)	64% (NG)	68% (NG)	65% (NG)	67% (NG)	63% (NG)	62% (NG)

For complete information on this model, please contact us at:

HEAT & GLO

No one builds a better fire

Web: heatnglo.com
Phone: (888) 427-3973
E-mail: info@heatnglo.com

[facebook.com/HeatandGlo](https://www.facebook.com/HeatandGlo)
twitter.com/HeatandGlo
[youtube.com/HeatandGlo](https://www.youtube.com/HeatandGlo)

HNG-1137U-0322

LIMITED LIFETIME WARRANTY!

The strongest in the industry, Heat & Glo provides a limited lifetime warranty on the most important aspects: firebox and heat exchanger.

1: For full warranty details see heatnglo.com
Fireplace glass and other surfaces get extremely HOT and can cause severe burns if touched. Do not remove the protective safety screen from the front of the glass. Keep a safe distance away. To learn more visit www.heatnglo.com/fireplace-safety

Google, YouTube and Google Home are trademarks of Google LLC. Amazon, Alexa, and all related logos are trademarks of Amazon.com, Inc. or its affiliates.

