



Where in the world is #LutherLoon @MarquisSpas?



### MARQUIS® CROWN COLLECTION FEATURES

Control system	MOiTouch™ touch-screen control
Therapy pumps	Dual-speed pumps
Jet system	Regal Hydrokneak™ array of jets with stainless steel trim
H.O.T. Zones™	Regal Whitewater™ jets (excluding Wish 1-pump, Spirit)
Flow control	High Output Therapy massage zones
SmartClean™	Dynamic Flow Control™ valve for water and air
SmartClean™	Automatic programmable filtration software
ConstantClean™	Integrated vortex™ filtration with antimicrobial protection, in-line sanitizer system & CO2 generator with Nuczer™ injection
Moximix™	Full-foam insulation
DuraShield™ Exterior	High-impact acrylic bonded with fiberglass/resin matrix
DuraShield™ Exterior	Durable, all-weather synthetic exteriors
WeatherShield™ Cover	Solar sheet formed ABS plastic
Reflexology	2 lb. density foam; heat shield skirt; linear heat shield fold
Water feature	Four-point backlit fountains
Headrests	Cushioned, resilient EVA material
MoodMaker™	LED accent light configuration

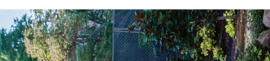
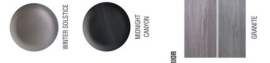
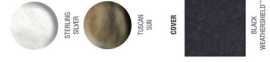
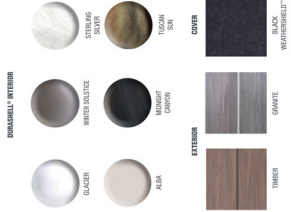
### MARQUIS® CROWN COLLECTION OPTIONS

Bluetooth Audio System	Wireless audio streaming, twin speakers & subwoofer
Jewel™ Lighting	Interior: Dimmable multicolor LED lighting system
MicroSilk®	Exterior: Dimmable white LED lighting system
Environments™	Oxygen skin health & beauty treatment (except 2-P Wish)
ControlSpa™ BE	Crown Spa I, Spa II, Spa II Hinged, 48 in Storage Bench
Cover Companion™	34 in. Resort/Spirit Curved Bench
Ultimate Experience™	Wireless, cloud connectivity
	Cover lift
	Two push Marquis towels, two insulated cups, one Luther Loon

**“I was spending \$200 to \$300 a month on massages to help with old sports injuries. Then I went golfing with a friend who had a hot tub at his house. After 38 holes, 15 minutes in his spa felt great. So I started shopping and decided on a Marquis. It's the best money I've ever spent. I use it year round, and enjoy 15 minutes of heaven every day!”**

-Dan

### COLOR CHOICES



## 2022 CROWN COLLECTION

The crowning jewels of hot tubs



**MAKING WISHES COME TRUE**  
 40th Anniversary  
 ©2022 Marquis Hot Tubs, Inc. All rights reserved. USA 1-800-895-4665



## INSIDE STORY

Marquis® is passionate about creating *The Ultimate Hot Tub Experience*®. From enhancing health and well-being, to rejuvenating body and mind, to connecting with family and friends, it's like having your own personal wellness center, where every soak improves your quality of life.

Ultimately, three hallmark features distinguish Marquis: superior high-flow therapy, easy and efficient water care, and luxurious skin health and beauty treatments. These "Big 3" features combine to deliver *The Ultimate Hot Tub Experience!*


### Experience healing therapy precisely how you like it

The Crown Collection is a masterpiece of innovation. It combines our most advanced therapy features and luxury amenities into the most elegant and flexible hydromassage system on the market.

Laminar flow optimizes water flow by eliminating turbulence. As a result, you experience deeper muscle-tissue penetration without

causing skin discomfort. Crown Collection hot tubs achieve laminar flow in over 90% of the jets. An array of Regal Hydrokinetic™ jets combine to form Specialized Massage Seats, each one offering unique therapeutic benefits.

The Deep-Tissue Massage Seat (with Target Touch jets) delivers a focused stream of water ideal for chronic pain or active lifestyles. The Shiatsu Massage Seat (with rotating Pulse Touch jets) helps you relax and rebalance. Thanks to gentle, persistent massage, the Relaxation Massage Seat (with Multi-touch jets) is a peaceful location to re-center. And the Swedish Massage Seat (or Lounge) combines deep-tissue massage with a variety of sensations for all-in-one therapy.



The Dynamic Flow Control™ valve is powerfully simple. Turning the lever towards red activates the red jets. Turning it towards blue activates the blue jets. Or, anywhere in between activates all the jets in your seat. Plus, an intuitive air control valve dials in the perfect sensation. Thanks to a Dynamic Flow Control valve or auxiliary pump button near each seat, the perfect setting is always within reach. Just the way you like it!

## HIGH-FLOW THERAPY

Like the weighty palms of a skilled masseuse, High Output Therapy™ Zones (H.O.T. Zones™) deliver deeper, more targeted therapy. Ideal for tight muscle groups in need of something extra. All H.O.T. Zone jets are red, so they are easy to identify. Simply turn your Dynamic Flow Control valve to red and unleash the power!

### High-flow, no sting

Most hot tub brands create an itching or burning sensation on the skin. In contrast, Marquis hot tubs deliver "high-flow, no sting" therapy. H.O.T. Zones penetrate deeply into muscles and fascia without irritating the skin surface. An assortment of Shoulder Zones, Lumbar Zones and Foot Zones allow you to focus the power where you need it most. The best way to understand it is to experience it firsthand. Schedule a test soak with your local Marquis Dealer and try it out. Feeling is believing!

## MESSAGE



Target Touch jets provide a directional water flow to target precise areas of the body



Multi-Touch jets create a broader massage sensation to loosen up large muscle areas



Pulse Touch jets gently massage all the right places with rotating swirls of water



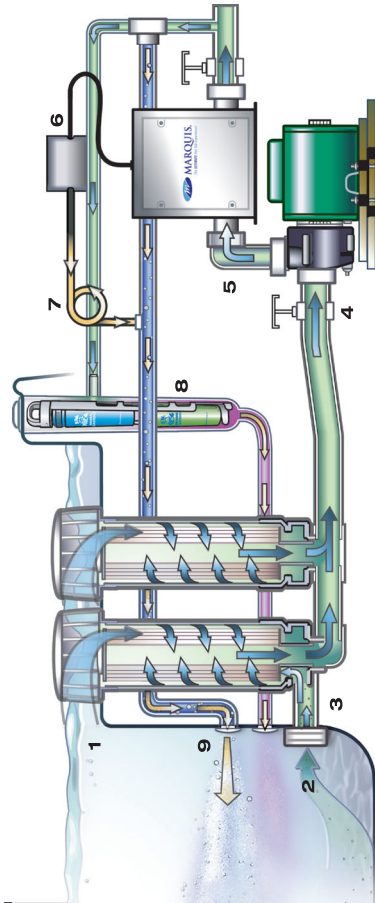
H.O.T. Zone Regal Whitewater-4 jet delivers everything from gentle foot massage to an exhilarating eruption of leg and foot therapy

## CONSTANTCLEAN+

### Clean, safe, crystal clear water

ConstantClean+ is the most efficient water management system on the market. It cleans more water volume in far less time: Up to 51 times per day in only 2-1/2 hours! It features high-flow Vortex™ ozonation, plus the added muscle of automated in-line sanitation and filtration. Simple yet sophisticated, it removes debris from top-to-bottom, and ensures convenient maintenance. High-quality Marquis filters feature increased surface area to improve efficiency, and an antimicrobial coating for added protection.

PRISTINE



### ConstantClean+ is precisely engineered for clean water

1. Vortex skimmers skim surface contaminants then direct them into filter cartridges
2. Water is also drawn from the footwell through a safety suction fitting
3. Water is forced upward through the filter to trap debris, mixing, recirculating and filtering all water, surface to floor
4. Filtered water is drawn into the primary jet pump
5. Water is routed through the high-flow heater assembly
6. Ozonator converts oxygen into activated ozone gas.
7. Mazzer® injector mixes ozone with water which is then introduced into the mixing chamber
8. Bacteria and other contaminants are oxidized before ozone reverts back to oxygen
9. Water passes through the in-line sanitation system and is treated with sanitizers before reentering the spa
10. Unused ozone and converted oxygen are reintroduced into the spa water

**“I owned another brand of hot tub, but my Marquis is by far easier to take care of. My water clarity is dramatically different! We have really noticed how much better our Marquis water smells and feels. Not only that, when I get out, my skin is not dry like it used to be in my old tub.”**

~Tom

How does ConstantClean+ work? After pulling water through the Vortex filters, the high-flow pump pulls filtered water through the heater. Then, it enters two different sanitation processes: The first path leads to the ozonator, which safely kills pathogens and microorganisms, and oxidizes organic and inorganic contaminants. The second path leads to the in-line sanitation system. Slow-dose sanitizer treats the water, and a mineral (or conditioning) cartridge makes it feel silky. Thanks to SmartClean™ software, the entire process is automated for your convenience.

### SmartClean makes it easy

SmartClean software automatically schedules cleaning cycles twice per day, it senses when you use your hot tub, and automatically schedules a cleanup cycle after each use. The daily schedule is preprogrammed but fully adjustable. Once your water

levels are balanced, the system basically runs on autopilot. Simply test your water levels periodically, and make minor adjustments if needed. That's it!

The entire system is highly efficient, requiring less chemical use and longer periods between draining and refilling. Truly, the ultimate in safe, clean water. Yet another “Big 3” reason you should consider a Marquis Crown Collection hot tub!

Worried about the coronavirus? The U.S. Centers for Disease Control (CDC) confirms that heat, humidity and chlorine or bromine in hot tubs should “remove or inactivate the virus that causes COVID-19.” In other words, the coronavirus should not be contractable from properly maintained hot tub water. What a relief!

**What about salt systems?** All hot tubs require sanitizer to maintain clean, safe water. But some promote so-called “chemical-free” hot tubs, claiming that salt systems are a more “natural” alternative. Basically, salt systems generate sanitizer by converting salt into bromine or chlorine. Unfortunately, salt also accelerates the corrosion of internal metal components, such as heating elements. This leads to reduced performance and costly repair bills. In contrast, Marquis skips the salt problem by directly slow-dosing SmartChlor with Chlorine (USA), or Sereine Bromine. You get clean, safe, crystal clear water, and long-term peace of mind.



## MICROSILK®

### Experience radiant health & beauty

Crown Collection hot tubs can improve your quality of life, and your skin health too! MicroSilk® oxygen skin therapy and beauty treatment is optional on every Crown model. MicroSilk water oxygen levels are up to 70% higher than tap water, transporting dissolved oxygen to the skin. Billions of microbubbles envelope your body in an oxygen-infused cloud, promoting blood circulation, hydration and exfoliation. Microbubbles also provide a soothing, effervescent sensation that feels luxurious. It has been described as "an oxygen facial for your entire body." MicroSilk is known to reduce the appearance of fine lines and wrinkles, and may even provide relief from symptoms of eczema and psoriasis. Everyone who adds MicroSilk loves it!

# HEALING

Yes, oxygen really is good for your skin. Increased oxygen levels result in better circulation and cellular respiration, which creates glowing and radiant skin due to rapid skin cell regeneration.

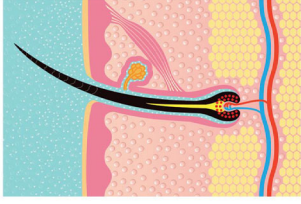
Real, tangible effects, no surgery and no recovery time, makes MicroSilk hydrotherapy the anti-aging treatment of choice for the modern, sophisticated person. Instead of invasive medical procedures, your treatment happens as you soak away all the worries of the day.

A MicroSilk bubble is negatively charged. Negatively charged ions are credited with increased serotonin production in humans, which is associated with emotional stability, a sense of well-being and promotes restful sleep. They also help eliminate free radicals in the body which are known to cause cellular damage, help relax your mind and body, and enhance recovery from physical exhaustion. This helps to slow the degenerative process which leads to premature aging.

Only Marquis has engineered the MicroSilk pump for peak performance to provide the level of health and beauty oxygen treatment you deserve. MicroSilk is another "Big 3" reason Marquis stands above the competition.

Microscopic bubbles penetrate into pores and sebaceous glands to oxygenate your skin, reduce fine lines and wrinkles, and promote collagen restoration as you soak.

- Other benefits include:
- Improved skin oxygen tension
  - Increased skin metabolism
  - Enhanced skin cell growth
  - Deeper cleansing of the pores to remove impurities
  - Increased hydration
  - Therapeutic levels of anions
  - Neutralization of free radicals
  - May relieve symptoms of eczema and psoriasis



“As a fitness and wellness trainer my clients are always asking for a treatment to make them look and feel more beautiful. After experiencing MicroSilk and seeing how radiant and smooth it makes my skin, I can highly recommend this amazing product!”

~ Jane

## ALL THE EXTRAS

Crown Collection hot tubs are adorned with almost every luxury amenity. But it's also nice to have options, especially when it adds extra functionality or convenience.

### Easy and intuitive control

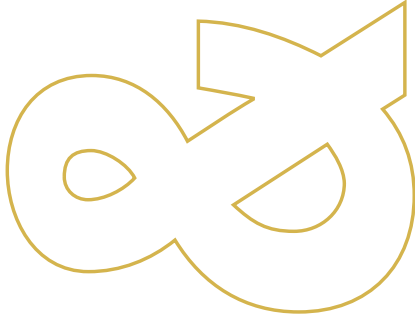
MQTouch™ is the command center of your hot tub. Simply tap the icons to fine-tune your settings. Check the filtration schedule, adjust temperature, check the time, dim the lights, or tap the Soak button for instant calm. Use the same interface to turn on MicroSlik® and control your mood music on equipped models. A quick tap flips the display for easy viewing inside or outside your hot tub. Want remote control? Add ControlMySpa™ wireless connectivity to control all the same settings from your mobile device.

Chill out or get the party started with optional Bluetooth Audio System. Featuring integrated speakers and a subwoofer, it can be controlled from your MQTouch display, or wirelessly using the ControlMySpa app.

### Light up the night

Upgrade to Jewel™ LED lighting for a truly magical experience. An array of multipoint LEDs encircles the interior, and highlights the exterior in all directions. Jewel lets you change interior colors, adjust intensity, or cycle through multicolor transitions for entertainment and relaxation. Sights, sounds and sensations... The Crown Collection embraces all your senses!

AMBIANCE



### Crown Environments™

Further enhance your hot tub with custom Environments modules. Designed and built by Marquis with the same exciting quality of craftsmanship and durable materials, Environments perfectly complement your Crown Collection hot tub. Steps and benches make it safer and easier to get in or out, and their sturdy construction ensures they won't blow away in a storm.

### Marquis and Make-A-Wish®

For the past 21 years, Marquis has been the preferred provider for Make-A-Wish hot tub and swim spa wishes. With help from our Dealer network, we team up to help wish kids find relief in the soothing water of a hot tub or swim spa. Over 1000 hot tub and swim spa wishes have been granted to children with critical health conditions across the United States, Canada, and the UK.

Hot tubs and swim spas are ideal for children who need physical therapy, or relief from the side effects of chemotherapy and radiation treatments. All in the comfort of their own home. It also creates a sanctuary for wish kids and their families to connect and spend valuable time together.

The partnership with Make-A-Wish is woven into our company culture. Every wish we help to fulfill is a reminder that our spas help people in need. In addition to over \$6.5 million in donations and discounts, a portion of the proceeds from select models is donated to Make-A-Wish.

### Marquis is made in America with pride

While other manufacturers have taken their production offshore, Marquis is steadfast on American soil. We believe protecting American jobs and maintaining quality is right for our nation and our customers.

*The Ultimate Hot Tub Experience®* is more than a tagline. It embraces every aspect of the Marquis brand. From the customer experience, as you consult with your local Marquis Dealer... To the ownership experience, as you operate and maintain your hot tub... To the user experience, as you enjoy soothing relief year after year. Thanks to a strong foundation laid over the past 42 years and the special people behind Marquis, you can rest assured you are in very good hands. After all, that's what makes us Marquis.



“I'm not very tech-savvy – I can hardly program my coffee pot! But after just a few minutes of playing around with the MQTouch, I really felt in control. It's truly the easiest, intuitive hot tub control ever!”

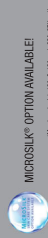
~Kerry



**THE SUMMIT**

NORTH AMERICA	INTERNATIONAL
SIZE 94 x 94 x 36 in	239 x 239 x 90 cm
MESSAGE SEATS 7	7
WATER CAPACITY 1779 l	1476 l
DRY WEIGHT 1100 lb	499 kg
FILLED WEIGHT 5020 lb	2277 kg
PUMPS 2 = 480 gpm	2 = 1817 lpm
ELECTRICAL 60 Hz	50 Hz
240V/30 or 50 A	230V/22A/3PH*
THERAPY JETS 65	65
H.O.T. ZONES 4	4
SPECIALIZED SEATS 2 Deep-Tissue, 1 Relaxation, 2 Shiatsu, 1 Swedish	

The Summit is the ultimate refuge to assemble your tribe. Three side-by-side Adromideck Chairs pamper every inch of your aching body. Across the way, four adjacent hydromassage seats deliver soothing relief, with easy access to the exhilarating Regal Whitewater-4™ jet. Four H.O.T. Zones provide targeted control and flexibility and its open layout offers plenty of room to stretch your legs!



MICROSILKS® OPTION AVAILABLE!

\*May be used in IFAK, SUSA or ICSA, 3PH optional



**THE EPIC**

NORTH AMERICA	INTERNATIONAL
SIZE 90 x 90 x 36 in	229 x 229 x 90 cm
MESSAGE SEATS 6	6
WATER CAPACITY 390 gal	1476 l
DRY WEIGHT 850 lb	386 kg
FILLED WEIGHT 4103 lb	1814 kg
PUMPS 2 = 480 gpm	2 = 1817 lpm
ELECTRICAL 60 Hz	50 Hz
240V/30 or 50 A	230V/22A/3PH*
THERAPY JETS 53	53
H.O.T. ZONES 5	5
SPECIALIZED SEATS 2 Deep-Tissue, 1 Relaxation, 2 Shiatsu	

The Epic is a true legend. Featuring sculpted multilevel seating for six, including a full-body Adromideck Chair for powerful neck-to-foot therapy. The super-deep soak seat envelops you in warmth, targeting your neck, shoulders and spinal column. Basking five H.O.T. Zones – Lumbar, Shoulder and Foot – including a Regal Whitewater-4™ jet, you are bound to recount this hot tub for generations!



MICROSILKS® OPTION AVAILABLE!



**THE EU PHORIA**

NORTH AMERICA	INTERNATIONAL
SIZE 90 x 90 x 36 in	229 x 229 x 90 cm
MESSAGE SEATS 7	7
WATER CAPACITY 380 gal	1438 l
DRY WEIGHT 825 lb	374 kg
FILLED WEIGHT 3994 lb	1812 kg
PUMPS 2 = 480 gpm	2 = 1817 lpm
ELECTRICAL 60 Hz	50 Hz
240V/30 or 50 A	230V/22A/3PH*
THERAPY JETS 53	53
H.O.T. ZONES 5	5
SPECIALIZED SEATS 2 Deep-Tissue, 1 Relaxation, 1 Shiatsu, 1 Swedish	

The Euphoria is a royal party in the making. Featuring a symmetrical layout with seven multilevel seats, including two extra deep therapy seats positioned side-by-side with full-body massage. Every seat can reach the explosive Regal Whitewater-4™ jet for powerful leg and foot therapy. Five H.O.T. Zones ensure you and your guests enjoy limitless euphoria!



MICROSILKS® OPTION AVAILABLE!



**THE DESTINY**

NORTH AMERICA	INTERNATIONAL
SIZE 85 x 85 x 36 in	216 x 216 x 90 cm
MESSAGE SEATS 7	7
WATER CAPACITY 310 gal	1173 l
DRY WEIGHT 700 lb	318 kg
FILLED WEIGHT 3269 lb	1492 kg
PUMPS 2 = 400 gpm	2 = 1514 lpm
ELECTRICAL 60 Hz	50 Hz
240V/30 or 50 A	230V/22A/3PH*
THERAPY JETS 41	41
H.O.T. ZONES 4	4
SPECIALIZED SEATS 2 Deep-Tissue, 1 Relaxation, 1 Shiatsu	

The Destiny is a technique of relaxation. With seven hydromassage seats facing each other, it's the perfect setting for deep conversations. The two deep seats deliver Lumbar or Shoulder H.O.T. Zone relief. One mid-height therapy seat features a broad cluster of H.O.T. Zone jets to work all your back muscles. A Regal Whitewater-4™ jet brings the total H.O.T. Zones to four. Plus, higher seats allow for everyone to find their comfort zone. Your Destiny awaits!



MICROSILKS® OPTION AVAILABLE!



**THE RESORT**

NORTH AMERICA	INTERNATIONAL
SIZE 85 x 85 x 36 in	216 x 216 x 90 cm
MESSAGE SEATS 5	5
WATER CAPACITY 360 gal	1363 l
DRY WEIGHT 760 lb	345 kg
FILLED WEIGHT 3762 lb	1706 kg
PUMPS 2 = 400 gpm	2 = 1514 lpm
ELECTRICAL 60 Hz	50 Hz
240V/30 or 50 A	230V/22A/3PH*
THERAPY JETS 50	50
H.O.T. ZONES 3	3
SPECIALIZED SEATS 2 Deep-Tissue, 2 Swedish	

The Resort is worthy of both King and Queen. Its uniquely curvaceous design delivers comfort and exceptional hydrotherapy. Multilevel seating for five includes dual Adromideck Chairs, one featuring Lumbar H.O.T. Zone jets, the other featuring Shoulder H.O.T. Zone jets, and both featuring powerful leg and foot jets. Two deep therapy seats and an entry/wooden seat complete the layout. A Regal Whitewater-4™ jet brings the total H.O.T. Zone count to three, making for a truly decadent destination!



MICROSILKS® OPTION AVAILABLE!



**THE WISH**

NORTH AMERICA	INTERNATIONAL
SIZE 77 x 77 x 36 in	196 x 196 x 90 cm
MESSAGE SEATS 5	5
WATER CAPACITY 260 gal	984 l
DRY WEIGHT 550/600 lb	249/272 kg
FILLED WEIGHT 2721/2771 lb	1234/1257 kg
1-5/IMP	240 gpm
2-H/IMP	330 gpm
ELECTRICAL 60 Hz	50 Hz
240V/30 or 50 A	230V/22A/3PH*
THERAPY JETS 29 or 30	29 or 30
H.O.T. ZONES 2 or 3	2 or 3
SPECIALIZED SEATS 2 Deep-Tissue, 1 Relaxation, 1 Shiatsu	

The Wish is everything you've dreamed a hot tub could be. Four multilevel seats cater to every body type, including an elevated seat for warming up or cooling down. Plus, a full-body lounge with ample room to cradle you in comfort delivers Lumbar H.O.T. Zone jets. A deep therapy seat features Shoulder H.O.T. Zone jets. Plus, two unique seats and a wooden seat can also take advantage of the Regal Whitewater-4™ jet (2-pump model). A portion of the proceeds from the sale of The Wish is donated to Make-A-Wish™ to help grant wishes for children with critical health conditions.



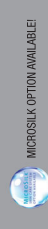
MICROSILKS® OPTION AVAILABLE! PUMPI



**THE SPIRIT**

NORTH AMERICA	INTERNATIONAL
SIZE 66 x 85 x 36 in	168 x 216 x 90 cm
MESSAGE SEATS 4	4
WATER CAPACITY 265 gal	1003 l
DRY WEIGHT 460 lb	209 kg
FILLED WEIGHT 2670 lb	1211 kg
PUMP 1 = 240 gpm	1 = 908 lpm
ELECTRICAL 60 Hz	50 Hz
240V/30 or 50 A	230V/22A/3PH*
THERAPY JETS 32	32
H.O.T. ZONES 2	2
SPECIALIZED SEATS 1 Deep-Tissue, 1 Relaxation, 1 Shiatsu	

The Spirit flows freely with healing therapy. Its curved front entry offers an elegant approach, with four hydromassage seats for up to three people. The soothing lounge with Shoulder H.O.T. Zone jets delivers full-body therapy. The deep therapy seat with Lumbar H.O.T. Zone jets works all your back muscles. Plus, a wooden seat fits your heart above the waterline, and makes for easier entry and exit. The Spirit will renew your body and mind every day!



MICROSILKS® OPTION AVAILABLE!